

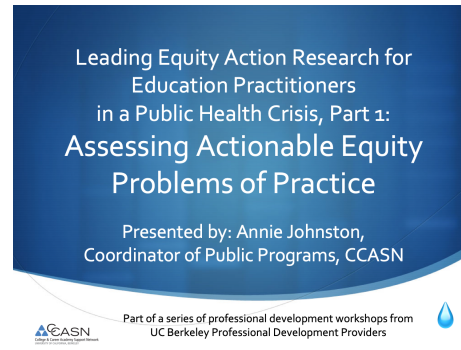
Leading Equity Action Research for Education Practitioners in a Public Health Crisis: A 3-part Workshop

Part 1: Assessing Actionable Equity Problems of Practice

[PowerPoint Presentation](#)

[Presenter Notes](#)

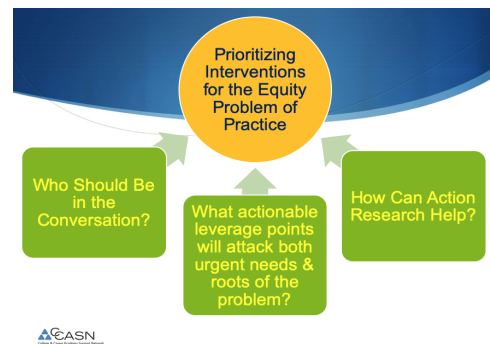
[Resources](#)



Part 2: Prioritizing Evidence-Based Actions to Address Equity Problems of Practice

[PowerPoint Presentation](#)

[Presenters Notes](#)



Part 3: Engaging Collaborative Data Collection and Analysis through Research-Practice Partnerships

[PowerPoint Presentation](#)

[Presenters Notes](#)

